



# Vision

“THROUGH KNOWLEDGE, POWER.”

Attention Business Students, Educators and Professionals:

## Business Without Borders - Theme for this Year's Triennial Conference

Delta Mu Delta members should start gearing up for the 2004 Triennial Conference, “Business Without Borders,” to be held October 15-17 in Fort Worth, Texas. Registration will begin on Friday morning at the newly renovated Radisson Plaza Hotel, after which attendees go on one or more organized tours of downtown companies. Fort Worth is home to Radio Shack, Pier 1, American Airlines, and a U.S. Mint, among others.

The first official function will be held Friday evening in the historic Fort Worth Stockyards, complete with a Texas long horn cattle drive, a tour of the stockyards, and conclude with dinner and line dancing lessons at the renowned Billy Bob's Texas. The Triennial meetings will begin Saturday morning with speakers from a variety of Texas businesses sharing the experiences of their companies that deal in the global economy. The speakers will also be giving advice on how Delta Mu Delta members should prepare in order to be successful in a worldwide competitive market.

Always highlights of the DMD Triennial, tables may be reserved for chapter displays and the Silent Auction will feature everything from university caps and sweatshirts to gift baskets full of logo items donated by each institution attending. Chapters should start planning now for their Silent Auction item. This year, major Silent Auction items will be announced at the Awards Luncheon, with time for more bidding before all other items are awarded Saturday evening. After the Awards Luncheon, roundtable discussions will be held covering such topics as increasing membership acceptance rates, gaining support for chapter activities, and making DMD membership more valuable. Also at the roundtables, DMD alumni will be relating what they wish they had known and how they wish they had prepared for that first job. Current DMD members should come ready to ask questions and take notes.

*On-line registration begins April 1st!*

After free time to explore the Sundance Square area, within a safe and short walking distance of the hotel, the day will culminate with the annual banquet and speaker. Sundance Square is known as Downtown Fort Worth's entertainment and shopping district. From local talent performing on the sidewalk, to numerous entertainment venues and restaurants, to a star at the famous Bass Performance Hall, Friday and Saturday nights always promise lots to do. Sunday morning will start with a breakfast buffet and the annual business meeting at which elections will be held for officers and members of the DMD National Executive Council. Door prizes will be awarded throughout the conference, but the 2004 Triennial will come to a close with a special drawing for two round-trip airline tickets.

Pre-registration for the 2004 Triennial conference will be available online beginning April 1 through October 1. The cost is \$50 per person with late or on-site registration of \$75 per person. A \$150 participation grant will be given to each chapter when registration packets are picked up at the Triennial. Information on transportation from the Dallas-Fort Worth International Airport will also be available on the DMD Triennial online site ([www.dmd-ntl.org](http://www.dmd-ntl.org)). Hotel registration will be available online at the Fort Worth Radisson Plaza website ([www.radisson.com/ftworthtx](http://www.radisson.com/ftworthtx)) beginning February 1. The deadline for hotel registration is September 15. Lodging cost will be only \$99, plus tax, per room of one to four people.



Janis Petronis  
National DMD Vice President  
Tarleton State University

### New Officers



3

4



SOSU Receives Charter

DMD to be welcomed by Trail Boss



6

# President's Message



**William Brunsen**  
National DMD President  
Eastern New Mexico

Happy New Year and welcome back to the academic arena. By now, all of us have returned to our normal "non-holiday routine" and the spring semester is well under way.

Delta Mu Delta has experienced a great deal of change since the last Vision was published. For nearly the last 13 years, DMD has purchased office services from another Honor Society. This arrangement worked very well and was beneficial for both organizations. However, as both

organizations thrived and grew, there was a need for more support for both organizations. In the spring of 2003, we began a significant transition. DMD has established a new office in the Chicago area with an executive director and support staff whose only responsibility is to meet the needs of Delta Mu Delta - faculty advisers, members, and alums. These staff members are committed to meeting all your needs by answering any questions and providing quality services in a timely manner. They are anxious to assist you, so let them know what you need.

We are fortunate to have exceptional staff members; Rich Sosnowski has been involved with DMD for nearly 30 years, as a student, as an alum, as a scholarship judge, an NEC board member and an officer, now as the Executive Director of the central office. Jeana Rendek is our part-time Office Assistant and brings many years of skills managing offices and dealing with the public. Even with well qualified and dedicated staff, as we progress through this transition period, there are likely to be a few bumps in the road. The staff is committed to providing high quality and timely services to chapters and members in spite of any unexpected problems; this makes it especially important that you let them know of any difficulties. Although we have a history of central office providing outstanding service, we continue to try to improve the provision of products and services; if there are problems, you MUST let us know so that we can "fix" them.

There are other things you can do to help make the transition easier. First, if there are problems or misunderstandings, please let us know as soon as possible and be specific about what the problem is and why you believe it happened. Second, go to the DMD web page and try it {[www.dmd-ntl.org](http://www.dmd-ntl.org)}. Do as many things as you have time for. Visit again when a broadcast email announces changes to a particular area.

While you are doing this, make notes of anything that doesn't work or that doesn't work as well as you would like. Let us know of your experiences - send us an e-mail to [dmd@dmd-ntl.org](mailto:dmd@dmd-ntl.org).

We want to make all of our services as easy to use as possible. If you hear of other folks having problems, let us know; you don't have to give us names, but give us enough information to identify the nature of the problem and the likely cause of the problem so that we have the information necessary to find and correct it.

Remember - the purpose of our DMD Society is to recognize superior academic performance. The role of the Central Office and staff is to support your efforts. The National Executive Council (NEC) is our Board of Directors; the faculty advisers are the field staff. All are unpaid volunteers with the dedication and commitment to the goals of our Society.

The NEC includes your Regional Representatives; their role is liaison between your campuses and the rest of the NEC; they are available to answer questions and provide assistance, both to members and faculty advisers. We are all part of a single team, pursuing common objectives.

Thank you for your support of DMD. Faculty advisers, please let us know what we can do to make your job easier and make each of you more effective on your campuses. Students and alums, what services should we be providing to you and/or your chapters. We want your feedback on how to make DMD more meaningful and useful to you.

Make the spring 2004 semester a great semester; make the year 2004 a year of progress and advancement for the Society. Let us help and support you in the pursuit of these goals.

## Greetings from the Executive Director

The President did a fine job of introducing me to you and informing you that the Central Office has a new location. By now, all the Faculty Advisers have been contacted with the emphasis on how we are using "paperless" techniques to improve efficiency. If the new procedures are closely followed, most orders can be out the door in 24 hours. But, we need your cooperation.



**Rich Sosnowski**

## Let Us Hear from You

*Delta Mu Delta would like to hear your comments and suggestions.*

E-mail us at [www.dmd@dmd-ntl.org](mailto:www.dmd@dmd-ntl.org)

### *Vision - Spring 2004*

R.L. Sosnowski - Secretary/Executive Director  
Caroline Portlock - Edition Editor

## 2003 Delta Mu Delta Scholarship Recipients



**Summer Albauer**  
Southern Nazarene  
University



**Jennifer A. Aldrich**  
LaGrange College



**Elizabeth A. Baker**  
Athens State University



**Erin Bauer**  
SUNY at Fredonia



**Michael A. Beckman**  
University of St. Francis



**Shawna Benjamin**  
Southern Nazarene  
University

# Meet your new DMD Officers



## Dr. Michael V. LaRocco, National Treasurer

Dr. LaRocco has been appointed by the National Executive Council to serve the remainder of the Treasurer's present term, ending November 2004. The vacancy was created by the resignation of Rich Sosnowski after his hiring as Executive Director of the Society.

Dr. Michael LaRocco is a Professor in the graduate business program at the University of St. Francis and founder of the University Masters of Business Administration and Masters of Science in Management programs. He has been teaching at both the undergraduate and graduate levels for over 26 years, and is the recipient of the University of St. Francis Excellence in Teaching and Campus Leadership Award. He holds a Bachelor of Science in Commerce and Masters of Business Administration from DePaul University, and was awarded a Doctor of Business Administration from Nova Southeastern University.

Michael has extensive business experience at both the national and international levels. He has worked for such companies as Midas International Corp, The Leggett Group and Hy-Gain de Puerto Rico. His consulting and research clients include British Petroleum Chemicals, Amoco Medical, Wm Wrigley Corp. and the Archdiocese of Chicago.

Dr. LaRocco has presented papers at numerous conferences, and has been a speaker for regional professional associations meetings on a variety of topics including marketing, management and on-line teaching.

Michael has been affiliated with Delta Mu Delta since 1978, when he was inducted into the Eta Chapter at DePaul University. He founded the Delta Kappa Chapter at the University of St. Francis, and was the charter faculty adviser and served the chapter for five years in that capacity. Michael has also served National as a Member at Large for the National Executive Council and subsequently as a scholarship judge. He is currently the National Treasurer of Delta Mu Delta.

Dr. LaRocco and Mr. Sosnowski have known one another for years. "I had the pleasure of inducting Mike into the Eta Chapter at DePaul University where he was a graduating MBA student many years ago", remarked Mr. Sosnowski. "I've watched his career with great satisfaction over the years."

## Dr. Larry A. Lynch, Regional Representative Region 2 - Eastern

*(Delaware, District of Columbia,  
Maryland, Pennsylvania, Virginia,  
West Virginia)*



Dr. Lynch was appointed by the National Executive Council to serve the remainder of the term of Regional Representative for the Eastern Region. This vacancy was created by the resignation of Dr. Sean Melvin.

Dr. Lynch is Professor of Finance and Chair of Business Administration and Economics at Roanoke College, Virginia. He has been with Roanoke College since 1978. Prior to getting into education, he was an electrical engineer at Appalachian Power Company. A double Virginia Tech Hokie (BSEE-1970 and Ph.D Finance-1987), Dr. Lynch is active on boards and in various organizations. He is currently on the Board of Directors of ACBSP and will serve as president of that organization beginning in July of 2004.

Dr. Lynch offers a wide range of management consulting and litigation support services. Currently, he provides expert witness testimony in litigation involving economic damages and management consulting in strategy planning and business performance measurement. Dr. Lynch's knowledge in business valuations, economic analysis and market assessments has been tested in court for over 15 years.

While his particular field of study is Forensic Economics, he writes and speaks on general stock market and economic issues, including the federal budget, as well as management subjects such as leadership.

He has also agreed to serve the Society as a member of the Investment Committee. Dr. Lynch can be reached at Roanoke College at 540/375-2413 or by e-mail at [llynch@roanoke.edu](mailto:llynch@roanoke.edu).

## Visit Our e-Store

Every item that was ever available for sale, plus new items, whether for personal use or for chapters, **is now available on-line**. Just click on the "Merchandise" button and view your options.

*Don't forget the scholarship filing  
deadline is March 31<sup>st</sup>!*



Jessica K. Boka  
Texas Lutheran University



Jennifer L. Colson  
Saint Vincent College



Melissa L. Elliott  
Northwest Missouri  
State University



Kari Michele Frerking  
Northwest Missouri  
State University



Brittany Lee Harrington  
Texas Lutheran University



Bridgett Mary Hayes  
Nebraska Wesleyan  
University

# Chapter Happenings



Pictured (from L to R) are: Dr. Jesse Rogers, University President; Kathy Bauer, Faculty Adviser; Janis Petronis, DMD Vice-President; and Dr. Charles McCullough, Professor of Marketing.

## Midwestern State University's Zeta Phi Chapter Receives the 2002 A. J. Jablonsky Award

"Since becoming the Faculty Adviser in 1997, one of my goals was for the chapter to receive the 'Tony Award,'" says Professor Kathleen Bauer. The Award was presented to the chapter at the Midwestern State University Honors Banquet, April, 2003. "Needless to say, I was shocked, then surprised, and finally, very elated that the Zeta Phi Chapter was selected to receive this 2002 Award. One of my goals had been achieved. But more important was the fact that in working toward this goal, we have made significant improvements to our chapter operations."

Since the 1997-98 year, the Zeta Phi Chapter has increased their acceptance rate from 48% to 95%. During the last three years, the acceptance rates have been 92% or better. The highly visible "Tapping Week" contributed to this increase. During that week, each Spring Semester, the College of Business Administration, COBA, building is decorated in gold and purple so that everyone entering the building is made aware of Delta Mu Delta. The participation of the COBA faculty in the Tapping Week has also emphasized the importance of membership in DMD. The faculty, dressed in academic regalia, enters classrooms, explains the purpose of DMD, and then publicly extends membership invitations to eligible students.

Participating in the DMD Scholarship Program has also benefited both the chapter and the school. In the last three years, ten students from the University received these Scholarships.

To be eligible for the "Tony", chapters must provide opportunities for student members to participate in community service projects. This requirement motivated the Zeta Phi Chapter to host a Food Drive and a Toy Drive to benefit the Wichita Falls community. These activities provided the opportunity for their members to become aware of community obligations.

Finally, by working toward this goal, the Chapter has increased the visibility of DMD on campus. DMD is listed as an honor society in the Undergraduate Bulletin and the Student Handbook and Activities Calendar. In addition, they are listed as a student organization on the MSU website. All the members are recognized in the Midwestern State University Honors Recognition Banquet each year.

"I am so proud to be the Faculty Adviser of the Zeta Phi Chapter and feel honored that we have been the recipient of the 2002 Anthony J. Jablonsky Award," says Kathy.

## Southwestern Oklahoma State University's Kappa Delta Receives National Charter

Southwestern Oklahoma State University recently received its national charter

for Delta Mu Delta, a new organization on the Weatherford campus. Presentating the framed Chapter Charter were (*second from left*) Dr. Janis Petronis, DMD National Vice President, and (*far right*) Kathleen Bauer, DMD Regional Representative. Accepting the Charter are (*from left*): Faculty Adviser Dr. Jerry Dunn; School of Business Dean Ralph May; Weatherford businesswoman Martha Sauer; and Faculty Adviser Dr. J.P. Hemminger.



## Delta Kappa Chapter Induction Ceremony University of St. Francis

The Delta Kappa Chapter at University of St. Francis inducted 45 new members at their April 24, 2003 ceremony held at the University. Pictured here are the Chapter Officers: (*pictured L to R*) Dr. Anthony Zordan (*Faculty Adviser*), Michael Beckman, Allison Tuidar, Mark Stofan (*Honorary Member*), Susan Gradilla, Matt Cooper and Sara Leone.



## 2003 Delta Mu Delta Scholarship Recipients (*cont.*)



**Amy Elizabeth Hindes**  
Texas Lutheran  
University



**Anthony B. Hulbert**  
Nebraska Wesleyan  
University



**Jonah Jones**  
Nebraska Wesleyan  
University



**Dawn C. Klos**  
University of St. Francis



**Kristie Nicole Law**  
Athens State University



**Valerie C. Lemke**  
Northwest Missouri State  
University

## 50 Golden Years and Counting . . .

### Baker University Receives Recognition

Baker University, listed in the *U.S. News* as one of the top 35 schools in the Midwest and was selected as a top school in *Princeton's Best Midwestern Colleges Guide*. Cited in the lists were Baker's quality programs, faculty and staff.

In addition, three Baker journalism students received awards in the Society of Professional Journalists (Region 7) Mark of Excellence competition. School newspaper, *The Baker Orange* also won second place in the same competition.

Baker University was accredited by the Association of Collegiate Business Schools & Programs (ACBSP) in 1994 and installed the Eta Phi chapter of Delta Mu Delta in 1996. Their charter Faculty Adviser, Dr. Kevin McCarthy, is currently serving on our National Executive Council. Our congratulations to Baker University.

### Beth Ann Coffman Receives Commendation from DMD's Executive Director Honored for Outstanding Performance



Beth Ann Coffman, senior at Southern Nazarene University received special student recognition for her academic achievements, personal accomplishments and community activities. She is the recipient of the National Business Education Association Award of Merit, the Breakthrough Award in Dale Carnegie Training and the Wall Street Journal Outstanding Student Award. Beth was further recognized nationally in the fall issue of the Business Education Forum. She is a recent inductee in the Gamma Sigma Chapter of Delta Mu Delta. Says Faculty Adviser, Dr. Richard Gaddis, "The most talented person I have had the opportunity to teach."

### DMD Continues to Grow - Upcoming Chapter Installations

We welcome these new chapters who were installed since our last publishing or who are being installed and inducting their first members this academic year. Our national membership now totals over 125,000!

- ◆ Bluefield State College, Bluefield, WV
- ◆ Cardinal Stritch, Milwaukee, WI
- ◆ Florida Memorial College, Miami, FL
- ◆ Gannon University, Erie, PA
- ◆ Jarvis Christian College, Hawkins, TX
- ◆ Spring Hill College, Mobile, AL
- ◆ Southwestern Oklahoma State University, Weatherford, OK
- ◆ Walla Walla College, College Place, WA
- ◆ Aurora University, Aurora, IL
- ◆ Maryville University, St. Louis, MO

On September 21, 2003, the Eta Chapter at DePaul University, Chicago, celebrated its golden 50th anniversary with a grand gala at the Hyatt McCormick Place Hotel. Inside the elegant ballroom, students, faculty, and chapter members from across the country enjoyed a festive occasion to honor the achievements of this renowned and respected honor society within the College of Commerce.

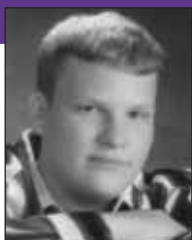


In recognizing their scholastic achievements, 136 graduate and undergraduate students were honored at the banquet by induction into the Society. Foremost among these were this year's Medallion Award winners, Kathleen O'Reilly and Dariusz Hendrych (pictured above), who were lauded for their dedication and service well in excess of their scholarly obligations. Keynote speaker, Ernest Wish (pictured above - center), Chairman of Wish Enterprises and a DePaul Life Trustee, spoke eloquently to the assembled gathering about the responsibilities of modern businesses, especially in light of recent corporate scandals and the rapidly evolving regulatory environment.

As a token of the society's great esteem for the individuals who have nurtured and contributed to its growth, certificates of appreciation were given to Professor Edwin Giermak, founding chapter student president and returning to serve as the Faculty Adviser for 25 years, and to the current Faculty Adviser, Dr. Gemma Welsh. In the most touching moment of the night, Carol Donovan was moved to tears by the chapter's gratitude and appreciation for serving in several chapter officer positions across nearly 15 years plus organizing this event. Our thanks to Jason Arndt, the chapter president, Carol Donovan, Gemma Welsh and everyone else who helped to make this evening a resounding success.

### Gamma Kappa Chapter Hosts 26th Annual Ceremony

The Gamma Kappa Chapter, at Bowie State University in Bowie, Maryland, held their 26th Annual Ceremony on April 19, 2003. Their keynote address was delivered by the preeminent TV news anchor, Maureen Bunyan, from ABC-7 in Rosslyn, Virginia. Four academic scholarships were awarded to DMD officers: Lawrence Stuckey, Portia Mathews, Theresa Washington and April Joy. Their Faculty Adviser is Dr. Fiseha Eshete.



Eric Lussier  
Western New England  
College



Melinda Alane Madsen  
Northeastern State  
University



Eliza Massi  
Hawaii Pacific University



William T. T. Mather  
Grand Canyon University



Jessica Miesner  
Northwest Missouri  
State University



Stephen P. Nasiatka  
Western New England  
College

## Give the Gift That Keeps on Giving With Forever Dollars

The Society's Scholarship Program depends on members like you. Each dollar contributed adds to the principal balance of the scholarship fund, and the interest earned helps support outstanding students for generations to come, which means your dollars will pay off forever.

We would like to thank all those who have contributed to Delta Mu Delta. Contributions are recognized on the back cover of the *Vision*.

If you would like to contribute, use the enclosed card and envelope to make your dollars live forever. With your help, our scholars can continue their quest for academic excellence in business administration.



*and as an added incentive...*

### 10K Gold DMD Keys Available for a Limited Time

For a limited-time only, each member that donates at least \$200 to the **Forever Dollars Scholarship Program** will receive a 10-karat-gold Delta Mu Delta key - either a pendant, pin, or with tac back - while supplies last. These unique gifts will be sent to members upon receipt of their generous donation.

Help the nation's most talented business students, and display your pride in membership by wearing this limited edition 10k gold DMD key to work or your next social function.

### Words of thanks from some of our recipients

"This award not only will enable me to finish my studies, but it also-and foremost-elates me and encourages me to go further in my curriculum. I cannot express well enough how helpful DMD's support is to my success in Graduate School". *M. Salaun*

"I am honored to be a recipient of this prestigious scholarship and I am very grateful for the opportunity that Delta Mu Delta has provided me." *Hung-Sheng (Joe) Lee*

### Delta Mu Delta - Central Office

2 Salt Creek Lane LL6  
Hinsdale, IL 60521  
Phone: (630) 321-9522  
Fax: (630) 214-6080  
[www.dmd-ntl.org](http://www.dmd-ntl.org)

## Kristin Jaworski Liggett is Blazing Trails

When Kristin Jaworski Liggett served as president of Tarleton State University's Zeta Lambda Chapter of Delta Mu Delta, she could never have dreamed of the unique marketing and management job she would hold after graduation. Often introduced with "The Lady is the Boss," Kristin is the Trail Boss, and official host of Texas's famous historic Fort Worth Herd at the Stockyards.

Her life-long interests in horses and ranching, along with her magna cum laude degree in marketing and the leadership experience gained in Delta Mu Delta, pulled her to the top of the pile of 45 applicants for the prestigious job.

Kristin calls on her background from the ranch and the university classroom to hire, fire, and manage people, Texas Longhorn cattle, horses, all along East Exchange Avenue of the historic stockyards, including a budget of nearly \$500,000. She



*Photo courtesy of the Fort Worth Star Telegram*

also serves as the Stockyards official representative with visitors and dignitaries and at events all over Texas and the U.S. Kristin said "My day-to-day duties as Trail Boss allow me to experience everything I love; livestock, tourism, marketing and interacting with an extensive variety of people".

Next October, that responsibility will include our Delta Mu Delta Triennial. Kristin will officially welcome DMD students and faculty advisers to the Stockyards, as well as participate in many of the other Triennial events, including the Saturday roundtables featuring DMD alumni.

### Care to join a Web SIG?

Special Interest Groups, SIGs, are a valuable tool. Only volunteers with an eager interest actually do participate and much can be accomplished. If you wish to be a member of a group that conducts regular reviews and suggests improvements for our website, contact us at [WebSIG@dmd-ntl.org](mailto:WebSIG@dmd-ntl.org) - the first volunteer from each region will be accepted with the second volunteer being an alternate. Just type "Web SIG" in the subject line & provide your contact information. The National Chapter at work!

### 2003 Delta Mu Delta Scholarship Recipients (cont.)



**Cheryl J. Petzel**  
Saint Xavier University



**Leanna Michelle Polidoro**  
Western New England College



**Kendra Priddy**  
Southern Nazarene University



**Marion Salaun**  
University of Incarnate Word



**Angela L. Satterfield**  
Western New Mexico University



**Malinda M. Shanks**  
Northwest Missouri State University

# How to contact your Regional Representatives



**Region 1 -  
Northeastern**  
*(Connecticut, Maine,  
Massachusetts, New  
Hampshire, New  
Jersey, New York,  
Puerto Rico, Rhode  
Island, Vermont,  
Virgin Islands)*

**Prof. B. Timothy Allport**  
Professor of Management  
**Mercy College**  
555 Broadway  
Dobbs Ferry, NY 10522  
phone: 914/366-7874 office  
Ports4144@aol.com.

## **Region 2 - Eastern**

*(Delaware, District  
of Columbia,  
Maryland,  
Pennsylvania,  
Virginia, West  
Virginia)*



**Dr. Larry A. Lynch**  
Business Admin, Economics and CIS  
Director of The Management Institute  
**Roanoke College**  
221 College Lane  
Salem, VA 24153  
phone: 540/375-2413  
llynch@roanoke.edu

**Region 3 -  
Southeastern**  
*(Alabama, Florida,  
Georgia, Kentucky,  
Mississippi, North  
Carolina, South  
Carolina, Tennessee)*



**Dr. Sundar Fleming**  
School of Business  
**North Carolina Central University**  
P.O. Box 19716  
Durham, NC 27707  
phone: 919/530-6410 office  
sundarfleming@yahoo.com

**Region 4 -  
North Central**  
*(Illinois, Indiana,  
Minnesota,  
Michigan, Ohio,  
Wisconsin)*



**Dr. Ashton I. Veramallay**  
Prof. of Economics & Director  
**Indiana University East**  
2325 Chester Blvd.  
Richmond, IN 47374  
phone: 765/973-8347 office  
averamal@indiana.edu.

**Region 5 -  
Midwestern**  
*(Iowa, Kansas,  
Missouri,  
Nebraska, North  
Dakota, South  
Dakota)*



**Dr. Kevin J. McCarthy**  
Business & Economics Dept.  
**Baker University**  
618 8th St.  
Baldwin City, KS 66006  
kevin.mccarthy@bakeru.edu

**Region 6 - Southwestern**  
*(Arkansas, Louisiana, New Mexico, Oklahoma,  
Texas)*

**Prof. Kathleen E. Bauer**  
Dept. of Accounting,  
College of Business  
**Midwestern State University**  
3410 Taft Blvd.  
Wichita Falls, TX 76308  
phone: 940/ 691-4716  
kathleen.bauer@mwsu.edu

**Regions 7 and 8 -  
Western & International**  
*(Alaska, Arizona, California, Colorado, Hawaii,  
Idaho, Montana, Nevada, Oregon, Utah,  
Washington, Wyoming)*

**Dr. Anne Smith**  
Prof. of Accounting,  
College of Business  
**Grand Canyon University**  
3300 W. Camelback Rd.  
Phoenix, AZ 85017  
phone: 602/589-2825  
asmith@grand-canyon.edu



**Catherine Irene Skeen**  
Northwest Missouri  
State University



**Sara Ranae Stenzel**  
College of St. Catherine



**Amber Weidner**  
Southern Nazarene  
University



**Kristina Welch**  
Western New England  
College

## Additional DMD Scholarship Recipients Not Pictured

**Laura Favuzza**  
Western New England  
College

**Richard Andrew Reid**  
Anderson University

**Hung-Sheng Lee**  
Wingate University

**Georgia S. Tredway**  
Grand Canyon University

**Michele Leanne Long**  
Oklahoma Christian  
University

# CONTRIBUTORS

Delta Mu Delta would like to thank the following persons for contributing to the Society from December 6, 2002 - December 31, 2003.

## \$1000 +

*Grand Canyon University*  
Mr. Brett D. Furniss  
*DePaul University*  
Mr. And Mrs. Anthony J. Jablonsky

## \$100 - \$499

*University of Cincinnati*  
E. Beyersdorfer  
*California State University, Dominguez Hills*  
Destry T. Setser  
*DePaul University*  
Carol Ann Eyre  
*University of the District of Columbia*  
Joseph W. Lane, Jr.  
Joseph D. McDonald  
*Dowling College*  
Harrison P. Tarver  
*Eastern College*  
Robert F. Donovan  
*Eastern New Mexico University*  
Dr. William H. Brunsen  
Dr. Dale Davis  
*Elizabethtown College*  
Dale High  
*University of Indianapolis*  
Sandra E. Ward  
*Madonna University*  
Michael D. Parise  
*Marymount University*  
Dr. Louise Marshall  
*Mount Saint Mary College*  
M. Dunbar Ashbury, Jr.  
*Nichols College*  
Julie E. Pike  
*College of Notre Dame of Maryland*  
Mildred D. Owens  
*Pepperdine University*  
Hugh Rose  
Calvin C. Waller  
*University of St. Francis*  
Bob Wysocki  
*Tarleton State University*  
Sharon Hartsell  
Cindy S. Reed  
*Wagner College*  
Edward Doxey

## \$25 - \$99

*Adelphi University*  
Norma R. Kalkhoff  
Michael N. Katayanagi  
Ernest P. Scarola  
*Ashland University*  
Kevin F. Cukrowicz  
Amy E. Fisher  
Linda L. Mills  
Mark W. Whitfield  
*Athens State College*  
Charlene E. Johnson  
Joan L. Johnson  
*Bowie State University*  
Levet Brown, Jr.  
Deloris Evans  
Katima A. Salter  
*Bucknell University*  
Debra Poskanzer  
*California Baptist University*  
Rose M. Harvey

*California State University, Dominguez Hills*  
Diane M. Maye  
Anthony P. Sherrod  
Lowell P. Thomas  
*Central Connecticut State University*  
Paul E. Guzzardi  
Amy L. Olsen  
*University of Central Oklahoma*  
Randy C. Jorgensen  
Shery Lynn Rogers  
*Chaminade University of Honolulu*  
Richard P. Campbell  
Zoya L. Lee-Kaue  
Brian H. Sekiguchi  
*University of Cincinnati*  
Nellie Broadus  
Bryan Brown, Jr.  
Donn Bolce  
Jane Collins  
Steven Kurtz  
Charles Laymon  
Stanley Quay  
Donald Wesley  
Katherine Westbrook  
*Cumberland University*  
Carri A. Trocha  
*Dallas Baptist University*  
Kenneth P. Berg  
Elnora Green  
*Dana College*  
Allison M. Botkin  
*Delta State University*  
Margarita S. Niewald  
Laura M. Scallion  
*DePaul University*  
Angela J. Centeno  
William Patrick Devine  
Oscar Griffin, Jr.  
Kenneth R. Harder  
James J. Johnston  
Martha A. Lenz  
Casey Anthony Nowak  
Renata A. Pijanowski  
Wanda E. Zygmuntowicz  
*University of the District of Columbia*  
James W. Cobb, Jr.  
Dale E. Lee  
Taunya Richardson-Martin  
*Dowling College*  
Antoinette R. Giordano  
Joseph W. Petrauskas, Sr.  
Ann Marie Ryan  
John J. Walsh  
*East Central University*  
Jimmy C. Heaslet, Jr.  
Patricia L. Leverett  
*Eastern Connecticut State University*  
Ryan G. Cavanaugh  
Edward J. Kelley  
Ruthellen Ouimet  
*Eastern New Mexico University*  
Paul L. Neal  
*Eastern University*  
Constance F. Esmonde  
Robert P. Van DerKamp  
Robin A. Loercher  
Gail E. Wallace  
Matthew S. Winters

Emily R. Silvis  
*Edinboro University*  
Amber Marie Libbon  
*Elizabethtown College*  
Meredith A. Penney  
Keith T. Zebrowski  
*Fairleigh Dickinson University*  
Steven A. Baranowitz  
Marguerite Susan Bremner  
Jaroslava Vonder  
Ruth E. Watson  
*Fayetteville State University*  
Lillian W. Maynor  
*Fisk University*  
Deborah E. Story  
*Florida Institute of Technology*  
Jenny L. Redish  
*Fontbonne College*  
Larry A. Chase  
Brian D. Liddell  
Dorothy L. Griggs  
Bernice F. Heavilin  
Beth Schlegel  
Sr. Carmen Schnyder  
*Geneva College*  
Daniel H. Raver  
*Grand Valley State University*  
Patricia L. Broman  
*Hawaii Pacific University*  
Monica M. Bailey  
Gordon J. Bruce  
Rogelio G. Tamayo  
*University of the Incarnate Word*  
Pamela D. Aramburu  
Rebecca Esparza  
*University of Indianapolis*  
Karen L. Fullmer  
Theresa A. Kruszewski  
John T. Simpson  
*King's College*  
Susan Ginzell Berdis  
*La Roche College*  
Sue A. Unterholzner  
*Long Island University*  
Mark F. Basta  
Victor Branco  
Linda A. Ferraro  
The Verizon Foundation  
*Madonna University*  
Jane E. Caplinger  
James S. Bonadeo  
Antoinette S. Knechtges  
Patricia K. Kus  
Marilyn J. Lawson  
Janet R. MacDonald  
Linda M. Shaheen  
*Manhattan College*  
Anne Cehelsky  
*Marymount University*  
Helen A. Clark  
Suzanne K. Cseh  
Michael J. Parkinson  
Joan Smith  
Thomas D. Willson  
*University of Massachusetts - Dartmouth*  
Lisa M. Cohen  
*Mercy College*  
Mario O. Barrett  
Daniel A. Ferguson  
Victoria Garbarino  
Patricia D. Graves  
Hamlet Herrmann

Bernadette W. Ndambuki  
Kevin S. Noonan  
Diane M. Pergola  
Sharone P. Serrano  
*Meredith College*  
Jane S. Davis  
*Methodist College*  
S. Justin Norvell  
Leighann M. Rastede  
*Millersville University of Pennsylvania*  
Zachary Daniel Heskett  
Kimberly J. Thomas  
*Mississippi College*  
Henry Hederman  
*Monmouth University*  
Martin F. Byrne  
Cynthia J. Miglin  
*Morehead State University*  
Thomas Philip  
*Mount Saint Mary College*  
Andrea Sculco  
*Mount Saint Mary's College*  
Robert B. Karsteter  
*Nebraska Wesleyan University*  
Dr. Laverne C. Rudell  
*New Hampshire College*  
Jane A. Carvalho  
Allison Gittens  
Marie C. Ouellette  
Cynthia Pilla  
*New Jersey City University*  
Evelyn M. Vargas  
*New York Institute of Technology*  
Joyce C. A. Ehrhardt  
Raymond Stefanowicz  
Alyssa J. Stone  
*Nichols College*  
Michael F. Allard  
Ronald W. Lantz  
*North Adams State College*  
Renee Joelle Gordon  
Jennifer J. Zabek  
*College of Notre Dame of Maryland*  
Karen D. Allmond  
Claudette C. Henderson  
Candy L. Quasney  
Peggy A. Weber  
*Ohio Northern University*  
Carl Kent McMaken  
Paul G. Kerr  
*Our Lady of the Lake*  
Gary G. Abernathy  
Richard C. Gauthier  
Edward E. Hester, Jr.  
Cathleen C. Johnson  
Richard I. Jones, Jr.  
Hajar Sanders  
Matthew P. Stregger  
Gloria J. Tobin  
*Pepperdine University*  
Drue S. Freeman  
*Philadelphia University*  
John F. Boyle  
Edwin W. Oldroyd, Jr.  
*Quinnipiac College*  
Jorge R. Adrian  
Carolanne E. Karell  
*Ramapo College of New Jersey*  
Marie E. Gomez  
*Richard Stockton College of New Jersey*

Matthew L. Burke  
Raymond T. Burke, Jr.  
Elan A. Carr  
Nancy L. DeRossi  
Marjorie N. Gabrielle  
Michael Gemellaro, CPA  
Kathleen Kimmerle  
Thomas F. Ryan  
Jason Sharpe  
Louise Seitman  
Marilyn E Vito  
*Sacred Heart University*  
Rosemarie Baker  
Michael G. Kuruc  
Maritza Ramirez  
*The College of St. Catherine*  
Mary D. Martin-Kahn  
Shari L. Nepper  
*St. Edward's University*  
Rachael B. Berman  
*University of St. Francis*  
Lori A. Russ  
*Salem State College*  
Ross A. Bulmer  
Gail F. Caputo  
Roccie A. Caputo  
Janice A. Crowley  
Karen L. Sikorski  
Cathy A. Zardas  
*University of Scranton*  
Shepard Bennett  
*So. Connecticut State U.*  
Maureen C. Schaefer  
*So. New Hampshire University*  
Carrie A. Mazzaglia  
*So. Polytechnic State U.*  
Charles C. Jensen  
Ronda L. Mills  
*St. Mary's University of Minnesota*  
Kathleen M. McGrath  
*University of St. Thomas*  
Janet S.W. Cheung  
Carolyn S. Goodrich  
*Saint Vincent College*  
Ann M. Giacobbi  
*SUNY at Fredonia*  
Tracy E. Kwiatkowski  
*Tarleton State University*  
Angelia D. Goss  
Gaylene E. Nunn  
Mary J. Smart  
Anita J. Terpstra-Meeves  
Jim Tracy  
Gayla R. Wright  
*Tiffin University*  
Jill E. Groves  
Lucy Jane Linn  
Charlene M. Prochazka  
*Wagner College*  
Claude Pappas  
Lynne Gable Pizor  
Kathleen A. Ramirez  
*Walsh College*  
Rodger Ciechanski  
Ann M. Fraser  
L. Lee Gillett  
Julia E. Miller-Kieler  
Grant S. Sherman  
*Western New England*  
Paul E. Contois  
*Western New Mexico University*  
Margaret A. Soucy